



Glaslatten



A17-15R*
17x15 mm



A17-17R*
17x17 mm



A17-17/S
17x17 mm, sp.4x4



A17-17R/S
17x17 mm, sp.4x4



A17-20
17x20 mm



A17-22R
17x22 mm



A17-25
17x25 mm



A17-27
17x27 mm



A17-35
17x35 mm



D17-15*
17x15 mm



D17-15/S*
17x15 mm, sp.3x4



D17-15/2S
17x15 mm, sp.3x4



D17-19*
17x19 mm



D17-19/S
17x19 mm, sp.3x4



D12-14
12x14 mm



D10-19
10x19 mm



D17-26
17x26 mm



D17-35
17x35 mm



D10-16
10x16 mm



D5
17x15 mm, 45° schuin



CSP13-19
19x13 mm, sp. 5x8



CSP19-19
19x19 mm, sp. 4x14



DSP27-19
27x19 mm, sp. 9x15



DUIVENJAGER
14x17 mm



DUBBELE DUIVENJAGER
14x31 mm



Opdekplaten



K9-32*
9x32 mm, sp. 3x16



K13-32*
13x32 mm, sp. 3x16



K13-32/5*
13x32 mm, sp. 5x16



K15-32/7*
15x32 mm, sp. 7x16



K13-37/5
13x37 mm, sp. 5x16



K13-45/5
13x45 mm, sp. 5x22



K20-34/10
20x34 mm, sp. 10x17



K25-37/13
25x37 mm, sp. 13x21



H9-32*
9x32 mm



H13-32*
13x32 mm



H13-37
13x37 mm



H13-45
13x45 mm

Sponningverhogende latten

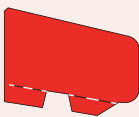


A8-18
8x18 mm

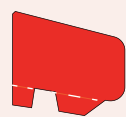


A8-30
8x30 mm

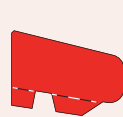
Ventilatielatten



V-1
21x30 mm



V-2
21x25 mm

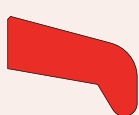


V-3
17x25 mm

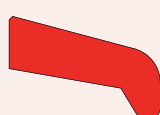
Neuslatten



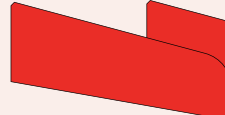
NL15-12
12x24 mm, sp.15mm



NL20-12
12x29 mm, sp.20mm



NL25-12
12x34 mm, sp.25mm



NZ-49
18x49 mm



NZ-54
18x54 mm



NZ-59
18x59 mm



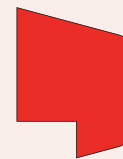
NZ-64
18x64 mm



Brandwerende latten



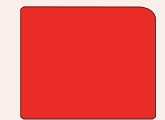
K25-45/13
25x45 mm, sp. 13x20



D3
25x33 mm, sp. 12x8



A25-25*
25x25 mm



A25-30
25x30 mm